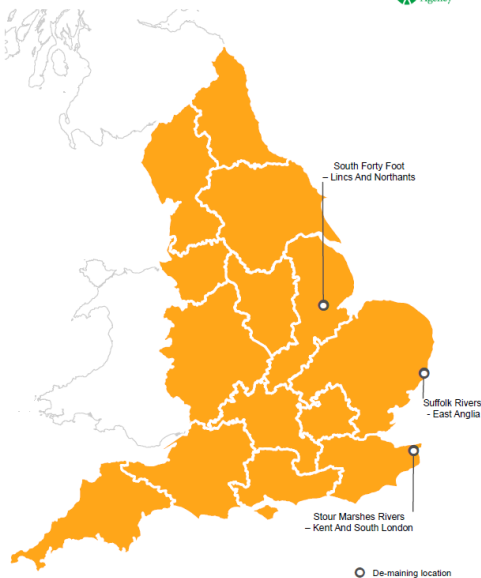


# Making changes to your local watercourse

January 2018

Rationalising the Main River Network - January Consultations



Welcome to the second in a series of newsletters designed to keep you up to date with our proposed changes to the way your local watercourses are managed, regulated and maintained.

Throughout October 2017 community drop-in events were held in the Stour Marshes Rivers area to discuss the option of re-designating several sections of watercourse from main river to ordinary watercourses (a term we refer to as de-maining) and to transfer them to the River Stour (Kent) Internal Drainage Board.

The feedback received is being used to shape the proposals for a formal consultation starting in January 2018.

The Environment Agency want to strengthen local flood risk management and decision making by ensuring the right bodies are managing the right watercourses.

All the sections of watercourse which we are proposing to de-main have low levels of flood risk and are not associated with major rivers or major population centres.

## Formal consultation

We are consulting to seek the views of individuals, groups and organisations who are affected by or interested in our proposals. This is a public consultation and we welcome everyone's views.

This consultation sets out all of the information on our proposals. It explains how the proposed sections of watercourse are currently managed and funded and provides details on future management and funding if de-maining goes ahead.

Pre-consultation material is available ahead of the consultation on the link below.

You will be able to view and give feedback between midday on the 15 January 2018 and midday on the 12 February 2018. There will be an option to view information and give feedback on each of the proposals or the de-maining project as a whole by accessing the following link:

<https://www.gov.uk/government/consultations/rationalising-the-main-river-network-de-maining-proposals>

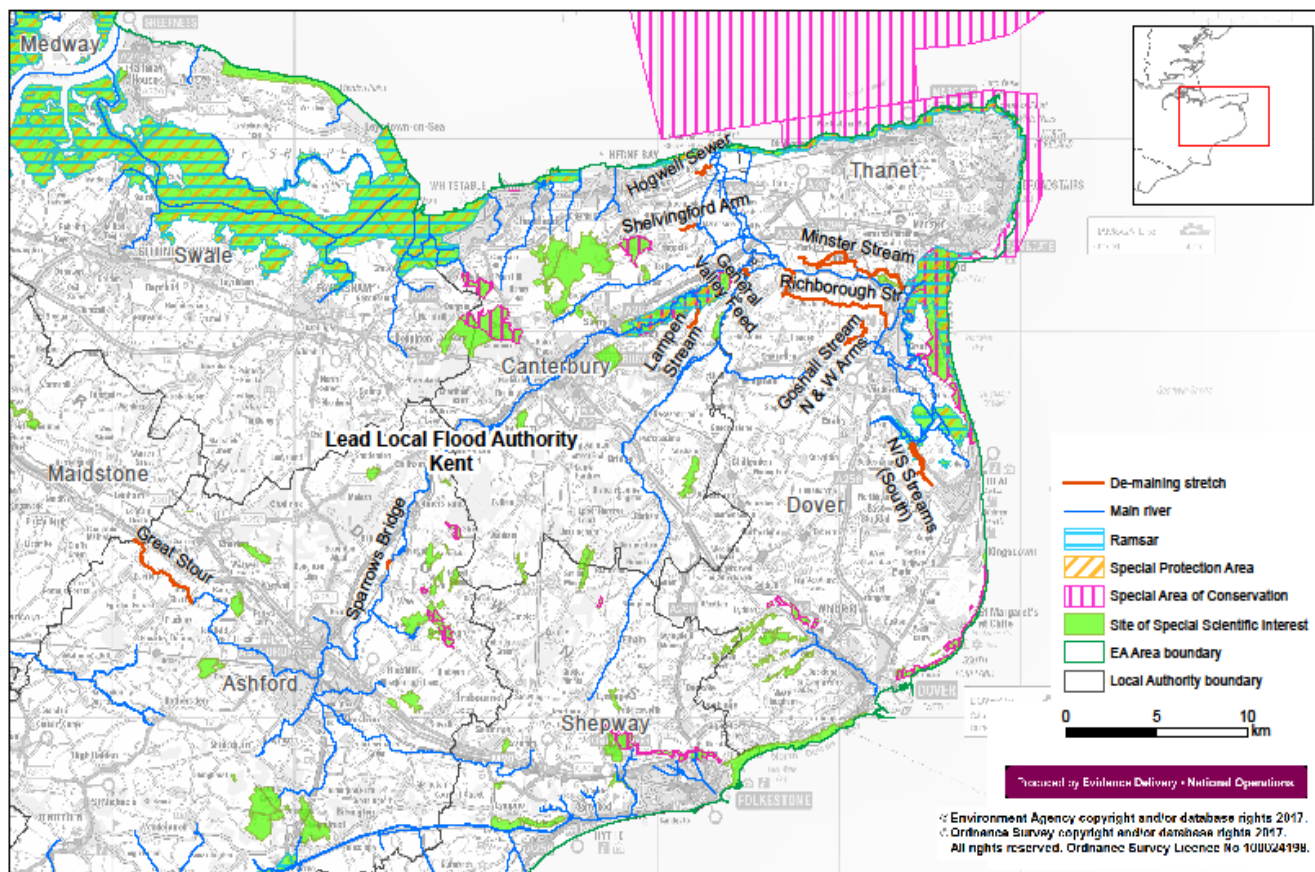
If you'd prefer to submit your response by email or letter, or if you'd like to ask for a printed version of the document to be posted to you, please contact Alex Bateman on the details at the end of the document.

Partners we are working with already have experience of managing and maintaining stretches of ordinary watercourse. By de-maining some main river to ordinary watercourse, our partners can maintain more of their local watercourses for local communities.

Your local watercourse is one of the projects across the country where we are working with the local community on de-maining proposals.

**“We want to strengthen local flood risk management and decision making by ensuring the right bodies are managing the right watercourses.”**

# RMRN De-maining Proposal: Stour Marshes



## We want to hear your views

To find out more, have your say and influence the proposals to de-main some stretches of watercourse in your area, view the pre-consultation information and take part in the formal consultation.

Your opinion on the project is important and we hope you can take part in the formal consultation.

## How can I find out more?

We understand that you may have some questions or concerns that you would like to discuss. If you do please get in touch with:

Alex Bateman  
RMRN Pilot Area Lead  
Orchard House  
Endeavour Park  
Addington  
West Malling  
Kent  
ME19 5SH.

[Alex.bateman@environment-agency.gov.uk](mailto:Alex.bateman@environment-agency.gov.uk). Telephone 02084 747 425

**The consultation opens on 15 January 2018 and closes on 12 February 2018.**